

Rehabilitation and extension of the M3 National Road in the Republic of Moldova, Chisinau – Giurgiulesti/Romania Border, Cimislia – Comrat section

ANNEX 3

Project beneficiary:



Prepared by:



MARCH 2026

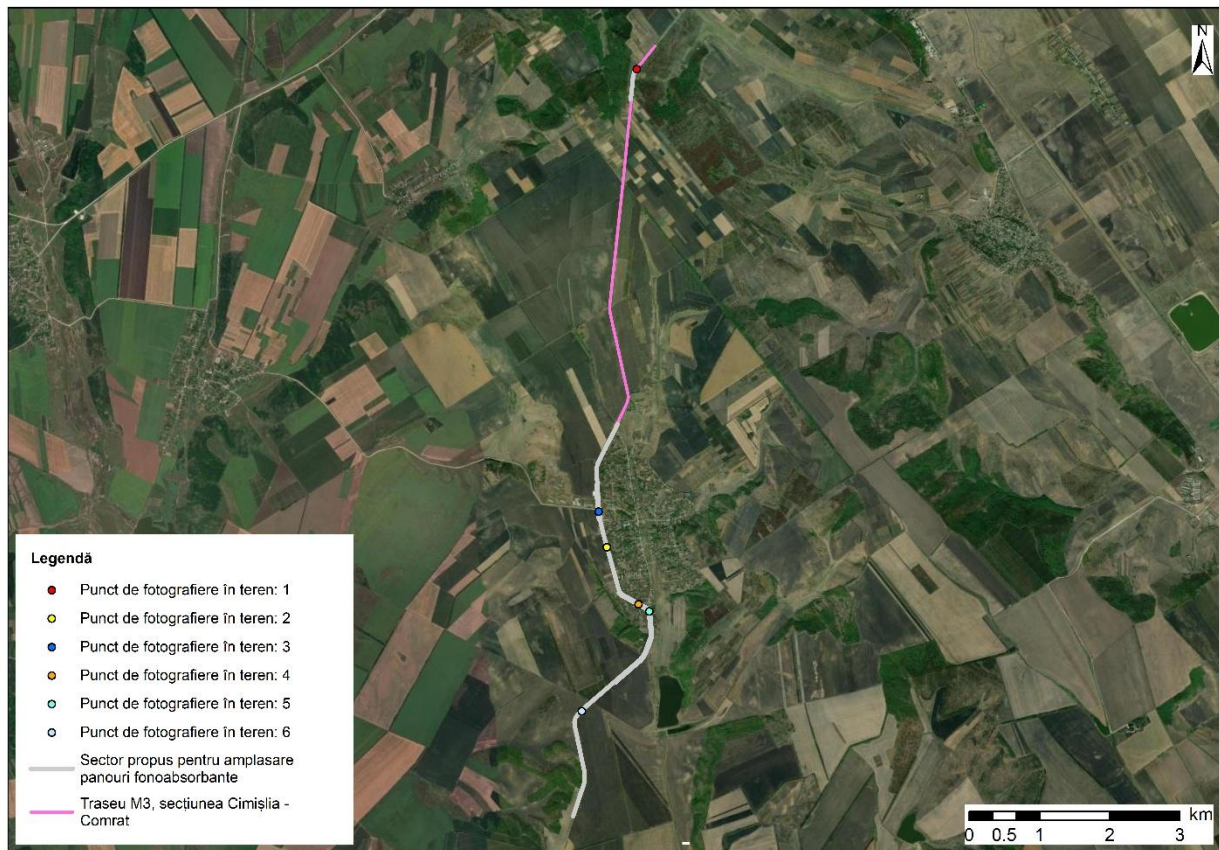


Figure 1. Location of the sampling points in the field, Road M3 Cimislia – Comrat



Figure 2. The M3 Cimislia – Comrat road, the proposed sector for the installation of sound-absorbing panels between km 0+380 – 0+860. Photograph point - GPS coordinates (EPSG:4326): Lat. 46.498333 N, Long. 28.757417 E, southwest direction



Figure 3. The M3 Cimislia – Comrat road, the proposed sector for the installation of sound-absorbing panels between km 5+555 – 9+790. Photo point - GPS coordinates (EPSG:4326): Lat. 46.437350 N, Long. 28.747700 E, northbound



Figure 4. The M3 Cimislia – Comrat road, the proposed sector for the installation of sound-absorbing panels between km 5+555 – 9+790. Photograph point - GPS coordinates (EPSG:4326): Lat. 46.441967 N, Long. 28.746467 E, southbound



Figure 5. The M3 Cimislia – Comrat road, the proposed sector for the installation of sound-absorbing panels between km 6+490 – 6+990. Photograph point - GPS coordinates (EPSG:4326): Lat. 46.429867 N, Long. 28.753050 E, southeast direction



Figure 6. The M3 Cimislia – Comrat road, the proposed sector for the installation of sound-absorbing panels between km 5+555 – 9+790 (left) – km 8+065 – 11+987 (right). Photograph point - GPS coordinates (EPSG:4326): Lat. 46.428883 N, Long. 28.754983 E, southbound

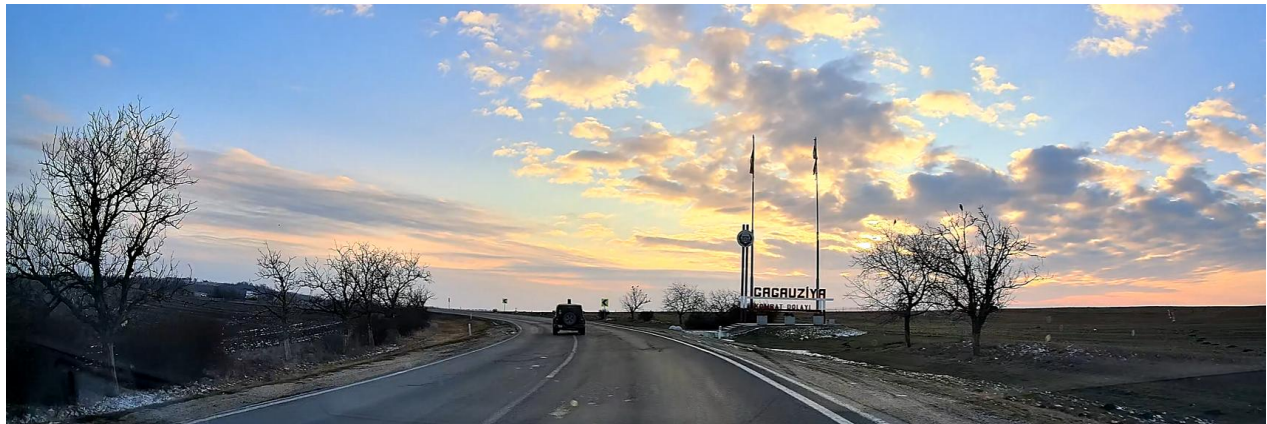


Figure 7. The M3 Cimislia – Comrat road, the proposed sector for the installation of sound-absorbing panels between km 8+065 – 11+987 (left). Photograph point - GPS coordinates (EPSG:4326): Lat. 46.416533 N, Long. 28.741600 E, southwest direction